



Thames Hospice

Criteria and services 2024



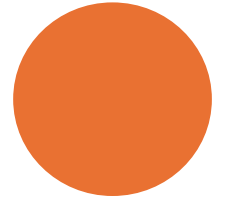
## What we offer

- Hospice at Home service
- Inpatient services
- Wellbeing Services
- Counselling and support services

# Hospice at Home Service

- Specialist Nursing and Medical support in the patient's home
- 24-hour, 7 day a week Nursing Response service.
- Care at home service ( package of care at the end of life if needed)
- Virtual ward
- Holistic focused care.

Support includes Advanced care planning, symptom control, financial signposting, psychological support.



# Inpatient Services

- 28 Beds over 3 wards
- All ensuite single rooms with sofa beds for relatives
- Specialist Medical, Nursing and Allied healthcare team
- Symptom Control admissions
- End of Life admissions





# Wellbeing Services

- Hospice Outpatient Programme
- Complimentary therapies
- Physiotherapy
- Lymphoedema services
- Occupational Therapies
- Outpatient Clinic



# Hospice at Home Criteria

- Symptom management for patients with complex physical, psychological, social, or spiritual needs.
- Healthcare professionals requiring specialist advice and support with complex Advance Care Planning and case management.
- Referral for any patients that are registered with an East Berkshire GP surgery.
- The service provides care for patient with a life limiting illness with a prognosis of less than 12 months.
- Patients, families, Carers, Health Care Professionals can all refer for:
  - Advice and support
  - Emotional support
  - End-of-life symptom control

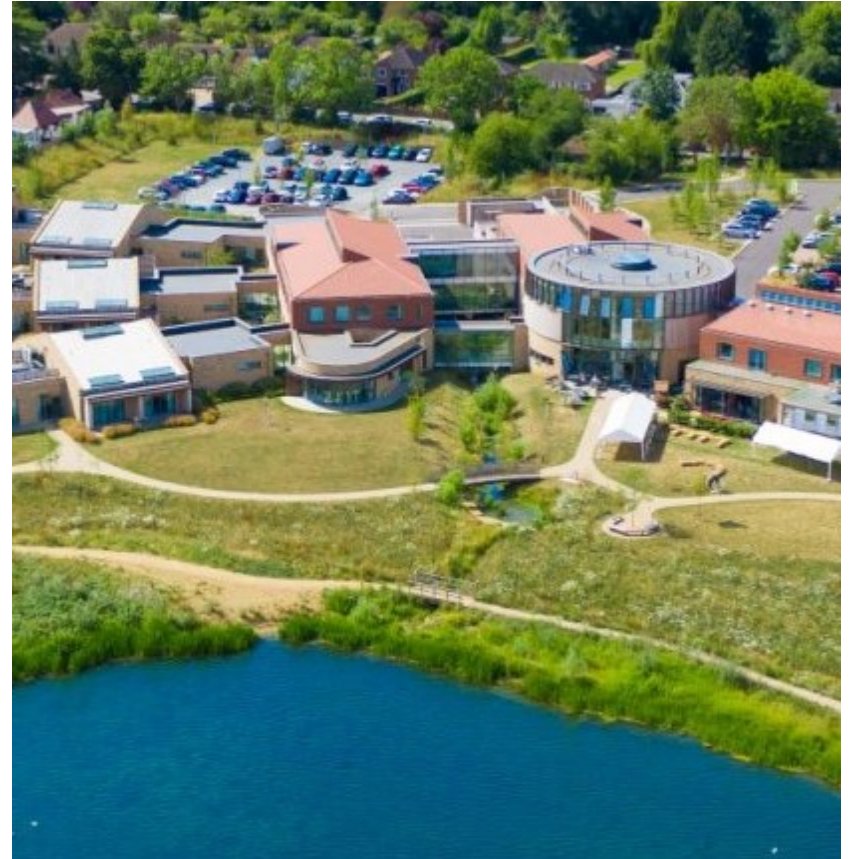




# Inpatient Services Criteria

---

- End of Life Care (prognosis of less than two weeks).
- Symptom control admission in the last year of life.
- Symptom management for patients with complex palliative physical, psychological, social or spiritual needs which cannot be effectively managed in other settings, requiring the assessment and support of the multidisciplinary team (expected length of stay less than four weeks)



# Wellbeing Services Criteria

- Patients diagnosed with life limiting illness considered to be within last 12 months of life. Patients with cognitive impairment will be considered based on a clinical risk assessment due to our care environment constraints.
- We can offer support to patients with a GP surgery in East Berkshire and South Buckinghamshire
- AKPS around 50 and above however patients can be individually assessed if needed.
- We accept patients 18 years and above
- The patient has capacity to consent to the referral and is aware of their diagnosis and prognosis.

