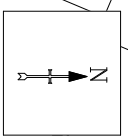
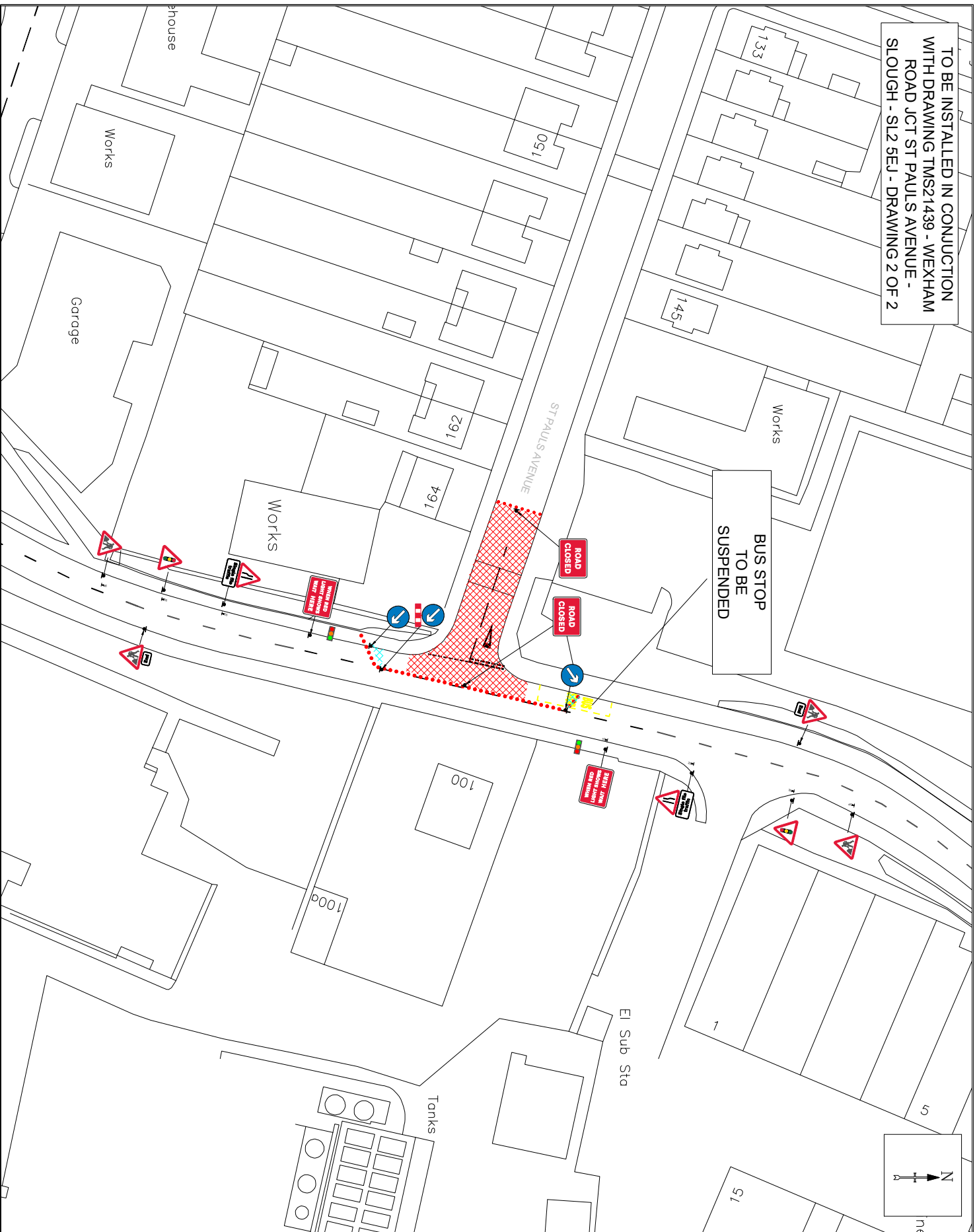


TO BE INSTALLED IN CONJUNCTION  
WITH DRAWING TMS21439 - WEXHAM  
ROAD JCT ST PAULS AVENUE -  
SLOUGH - SL2 5EJ - DRAWING 2 OF 2



**TMS**  
Traffic Management  
Services Ltd.

- NOTES:**
- All Traffic Management will be set out in accordance with the road works, one of the traffic signs Manual and Safety at Streetworks and either the sign reference numbers shown in this drawing or to the Traffic Signs Regulations and General Directions (TSRD) 2019.
  - All Division signing will be fully installed before the closure is brought into effect.
  - All sign frames will be secured with sand bags.
  - Each sign frame will be positioned on the side and will be positioned so as not to obstruct any other sign, footpath or visibility.
  - The inner boundary of the safety zone is marked by clearly but to appropriate distance for the speed of emergency.
  - Any Overhead cables shown on the drawing are for guidance only, the contractor shall make themselves aware of the exact position of all management. Underground services are not shown but should be anticipated.

**KEY**

- Traffic Cones
- Traffic Sign Direction
- Traffic Signals
- Ped Barriers
- Works Area
- Safety Zone

THIS DRAWING IS THE PROPERTY OF TMS. IT IS THE RESPONSIBILITY OF THE USER TO ENSURE THAT ALL REQUIRED SIGNAGE AND SAFETY MEASURES ARE IN PLACE TO MEET THESE PROPOSED WORKS. THIS DRAWING IS A PROPOSED INPUT AND THIS DRAWING IS NOT RESPONSIBLE AND DOES NOT GUARANTEE THE ACCURACY OF THE INFORMATION PROVIDED. THE USER SHALL BE RESPONSIBLE FOR VERIFYING THE INFORMATION PROVIDED.



**2 - WAY LIGHTS & ROAD CLOSURE**

**WEXHAM ROAD JCT ST PAULS SLOUGH SL2 5EJ**

Drawn by	SB	Date:	20/04/23
Checked by	WH	Date:	20/04/23
Approved by	DH	Date:	20/04/23
Drawings	TMS21439	Revision	
Drawing Scale	Not to Scale	Part Scale	1:1

DO NOT SCALE FROM THIS DRAWING