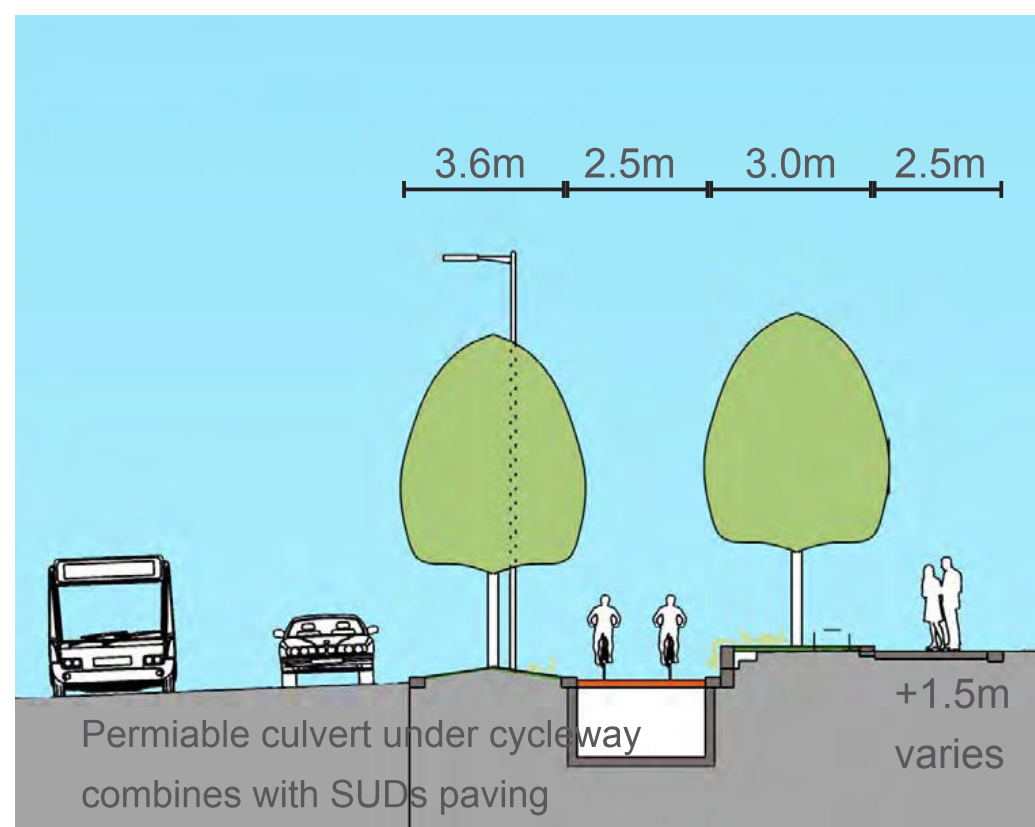
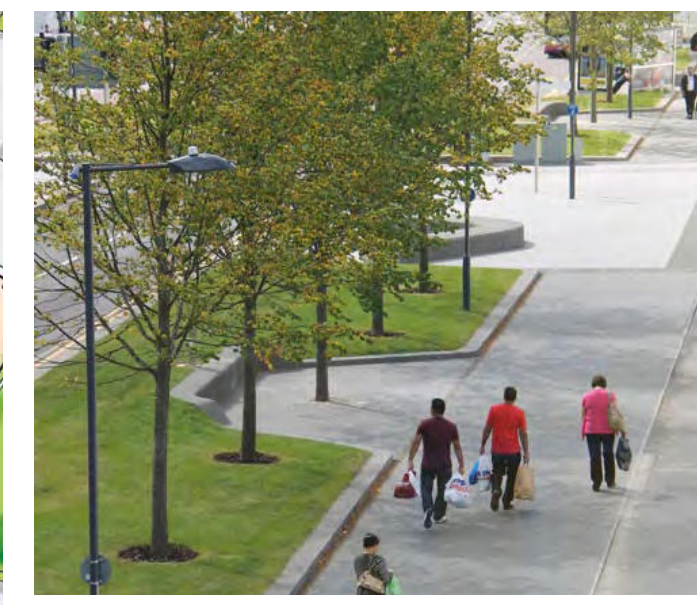


- 1 New layered pedestrian and cycle route
- 2 New raised table
- 3 Revised bus stop
- 4 Revised vehicle entry to Toby Carvery
- 5 Formalised parking to Foxborough Close
- 6 Area can be returned to estate by moving acoustic wall forward and landscaping courtyard

A note that if required a gateway could be improved by re-cladding the existing flats combining this with the new landscape and courtyard



The creation of a pleasant tree lined cycle and pedestrian route toward the kerb edge of the London Road can be achieved by replacing the open land drain with a permeable concrete culvert under the segregated cycle way. This combined with a double layer of trees and keeping pedestrians at a higher level than the cars will create a sense of separation

from vehicles. It is an opportunity to revise the entrances to the Toby Carvery & Hotel to simplify the relationships between pedestrians and cars. The bus stop can be revised to remove the bus bay and improve visibility. A new raised table can be created on the road leading to Foxborough close providing step free access for pedestrians.